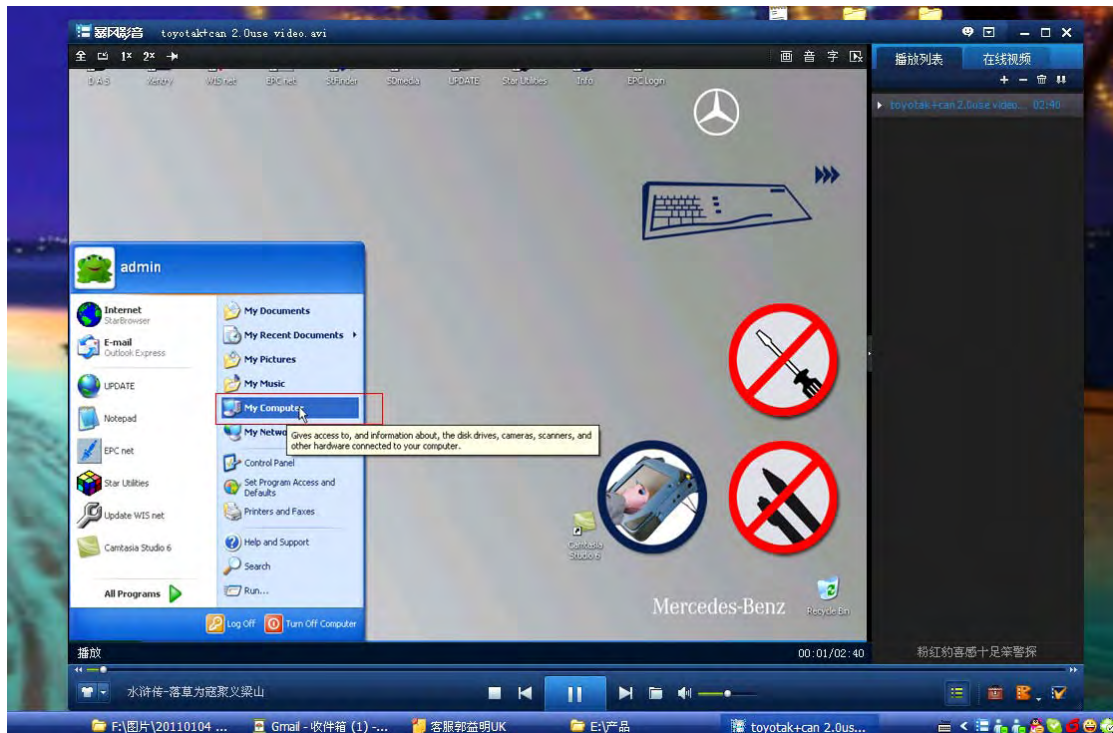
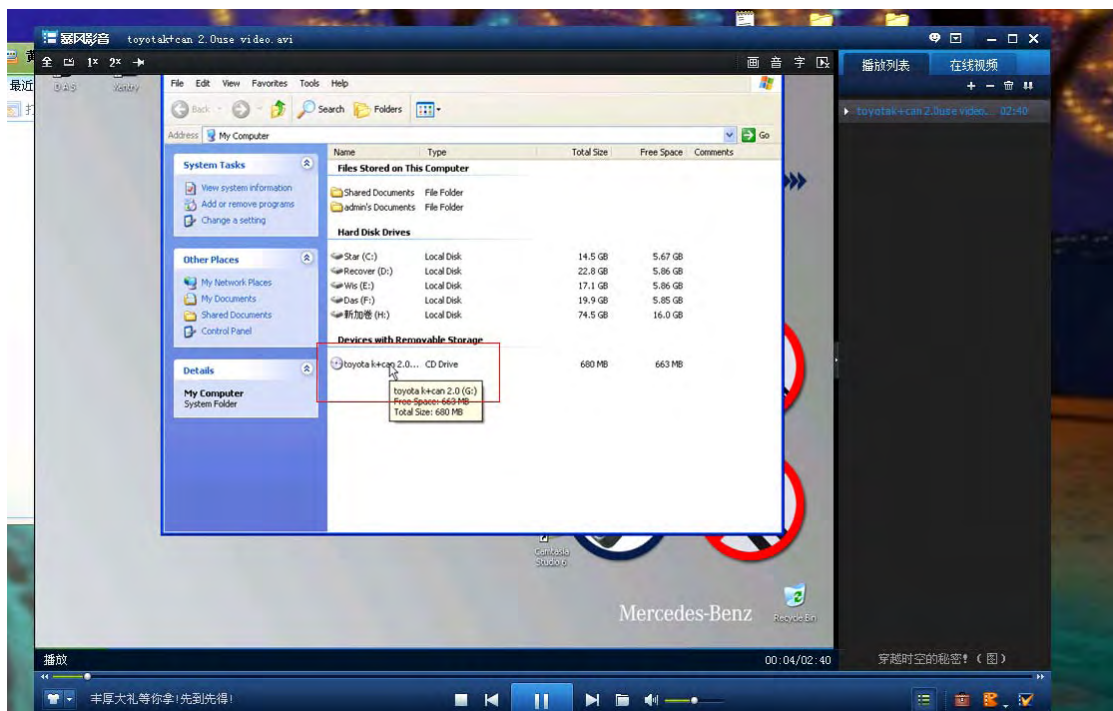


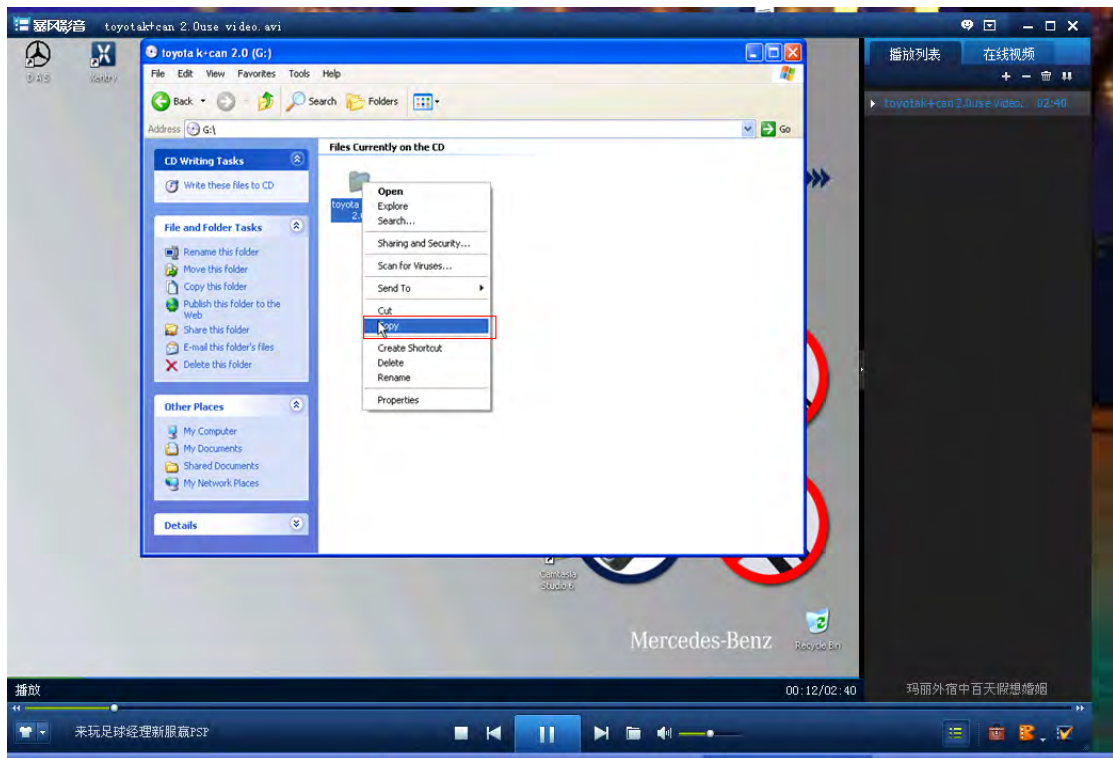
# 1. Click “My Computer”



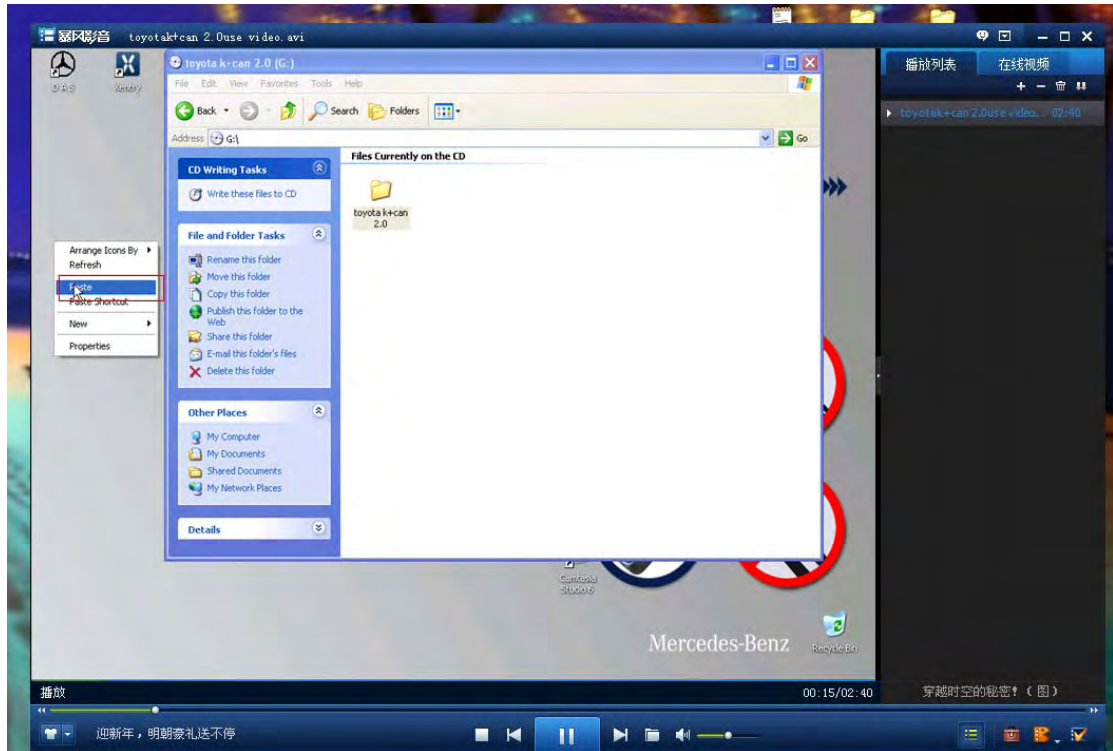
# 2. You will see “Toyota commander 2.0 software” on your computer Dic, open the software then.



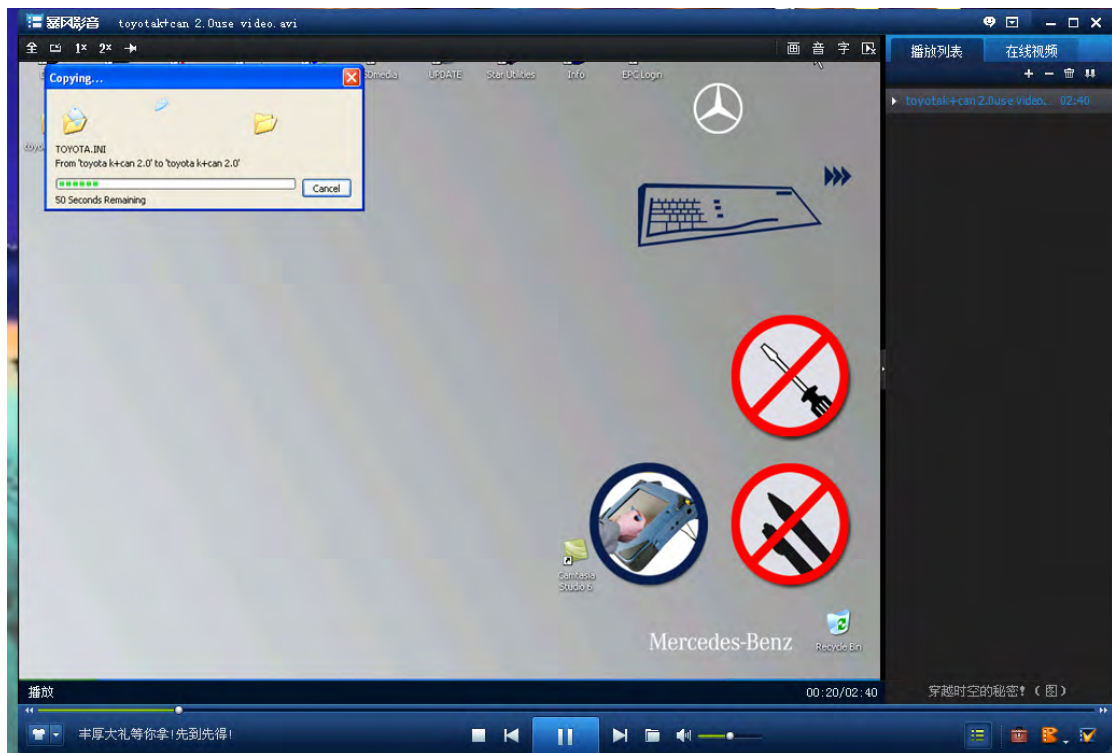
### 3. Copy the software to your Computer



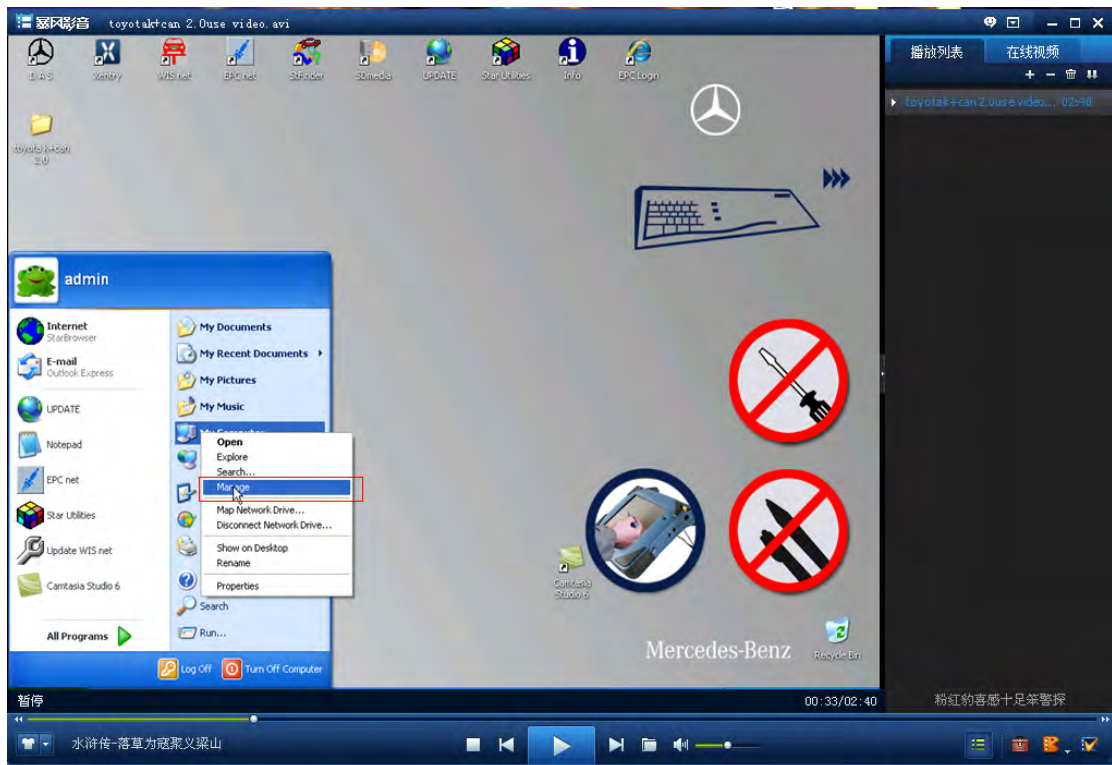
### 4. My engineer copy it to his desk of his computer.



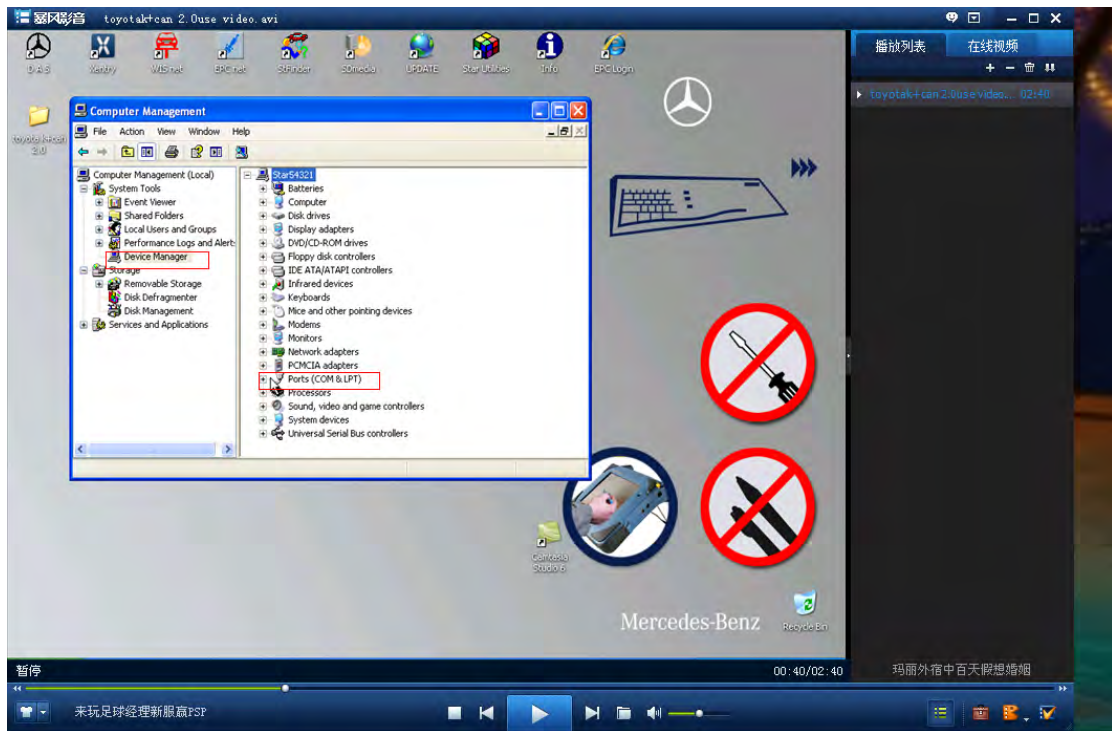
## 5. Copying



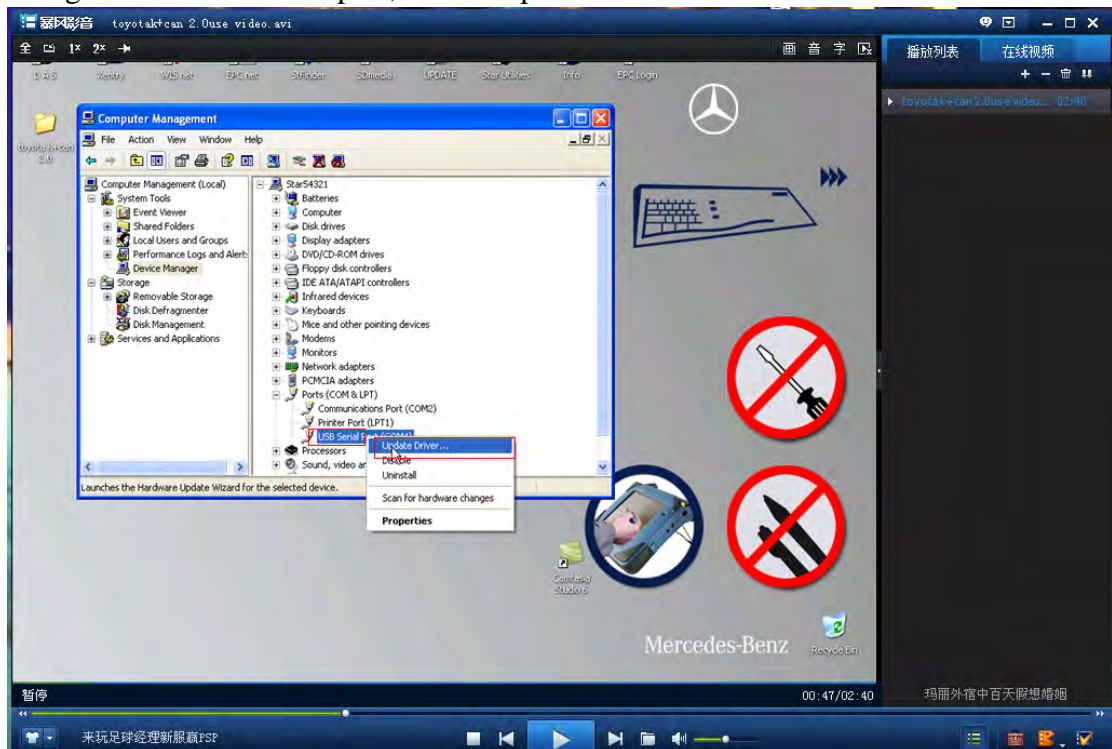
## 6. Right click "My Computer", and then click "Manage"



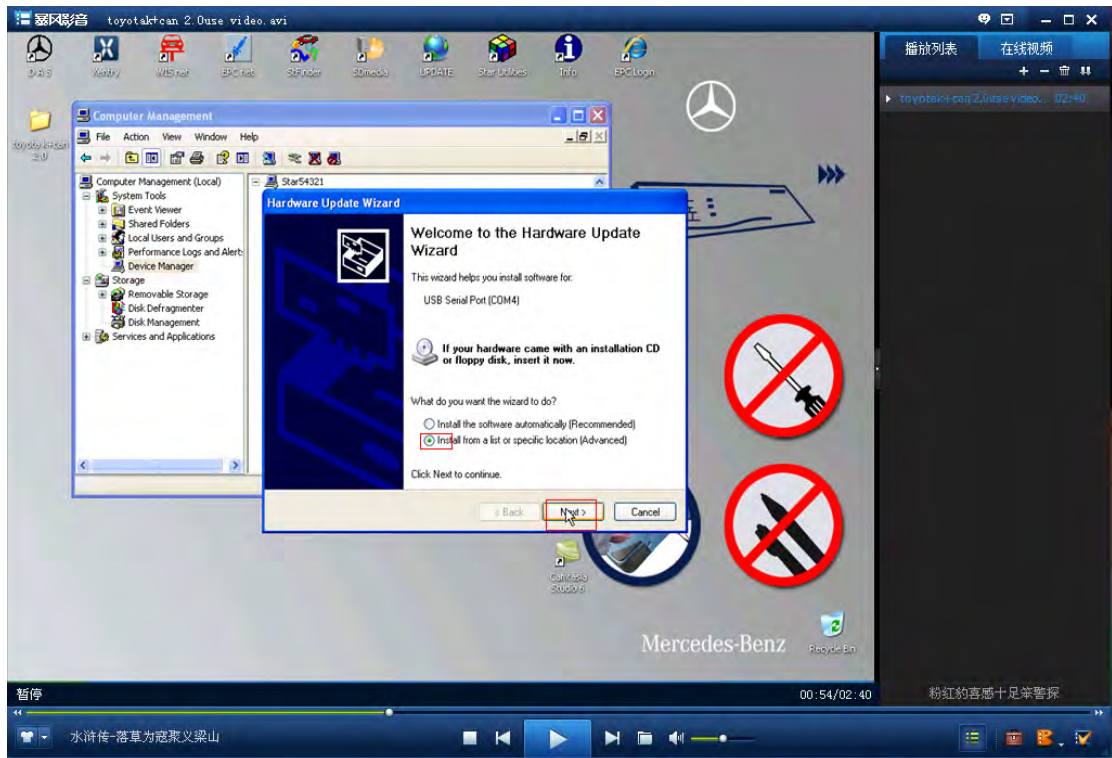
7. Click “ Device manager”, you will see Ports(COM/LPT)



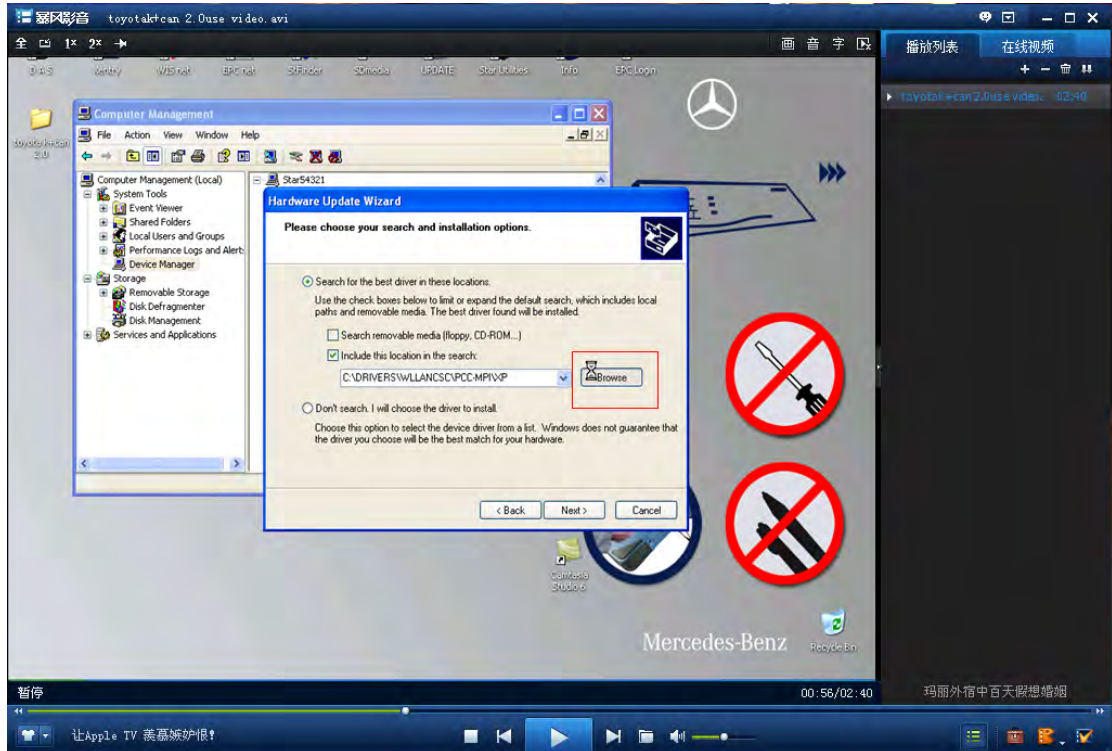
8. Right click USB Serial port, click “ Update driver”



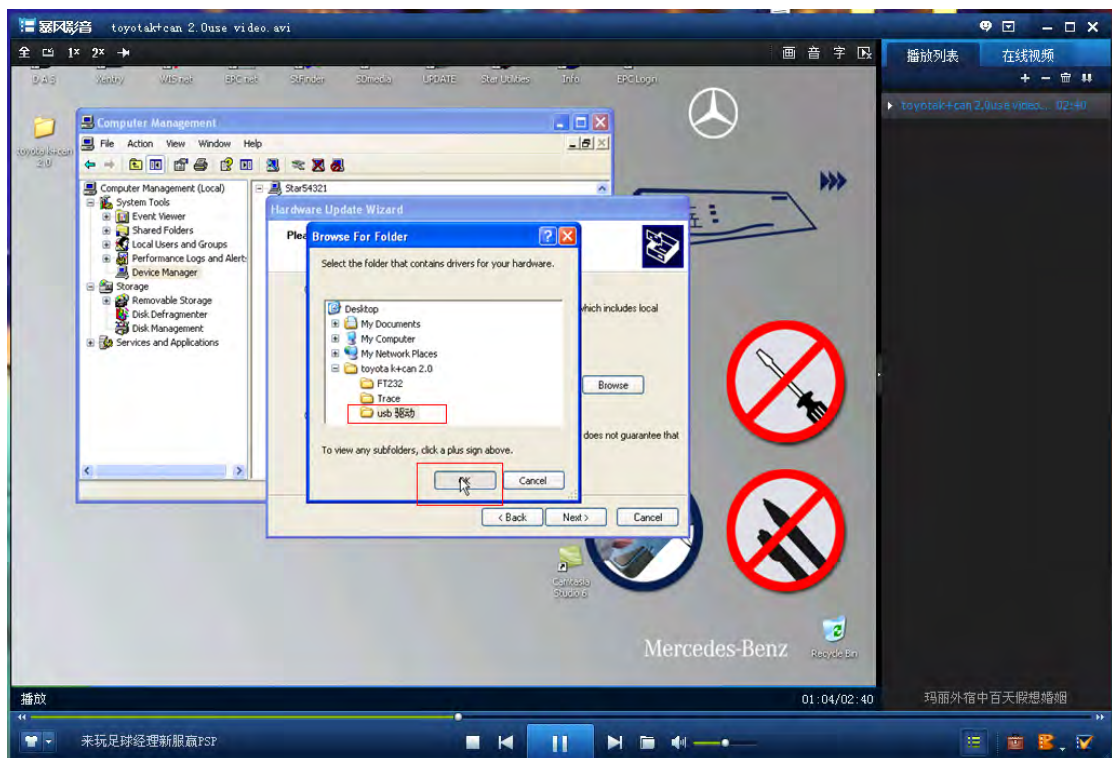
9. You will see the following, and do as the red marks.



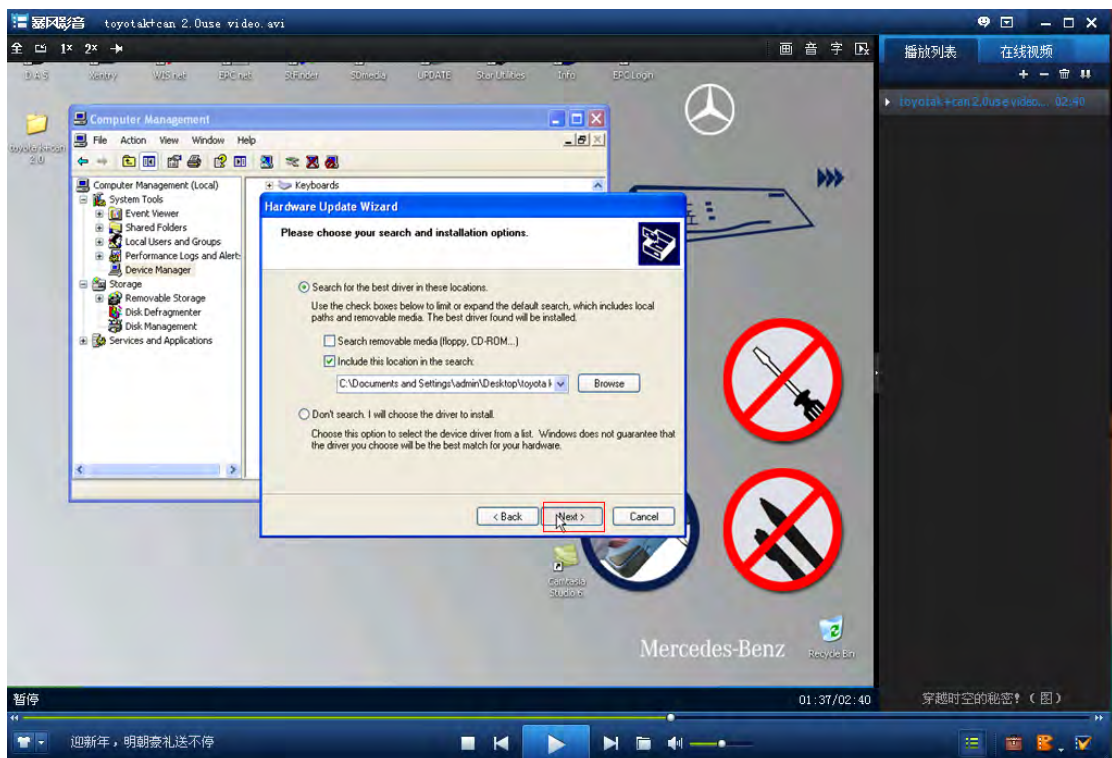
10. Click the “Browse” to find the USB Driver



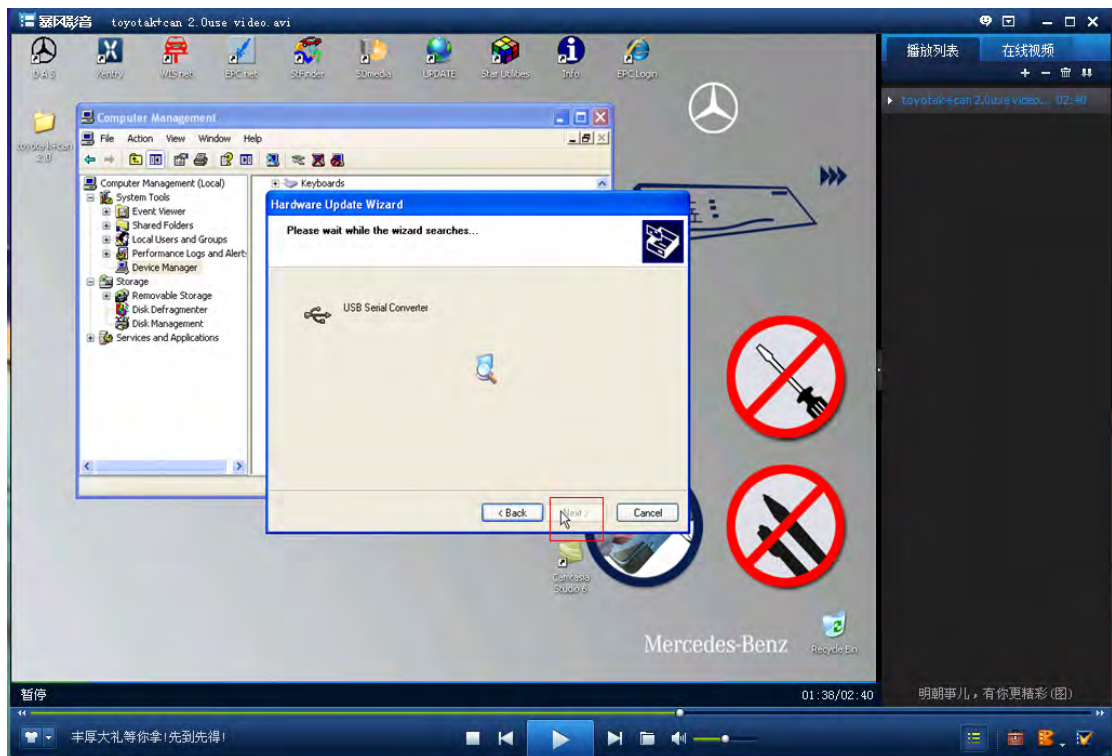
11. Find the USB Driver from the toyota commander 2.0 software on the desktop of your computer



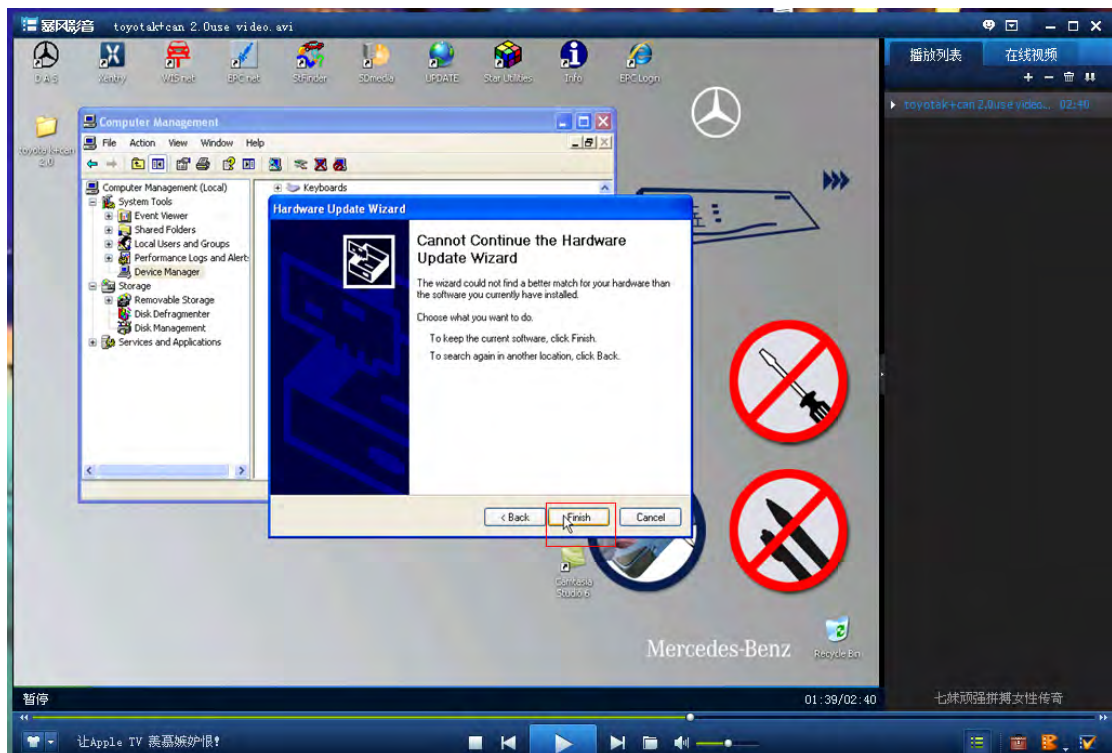
12. After choose the USB Driver, and then click “Next”



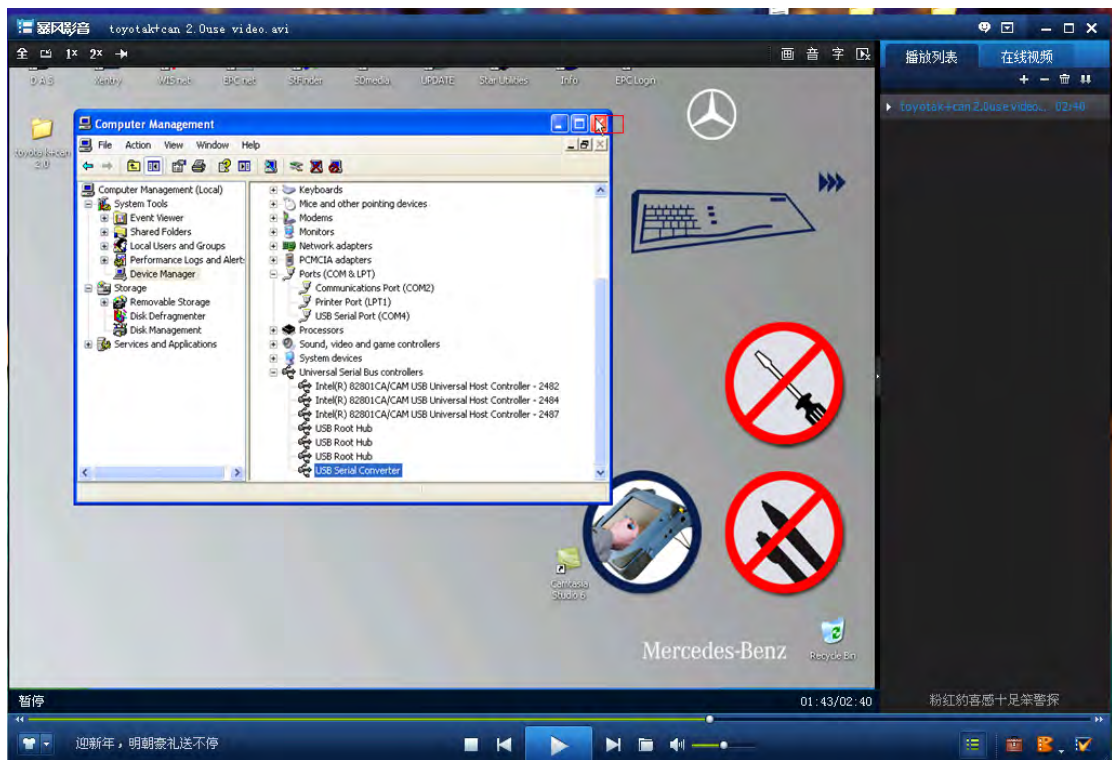
13. You will see the system will find the USB Driver for you automatically. Then click “Next”



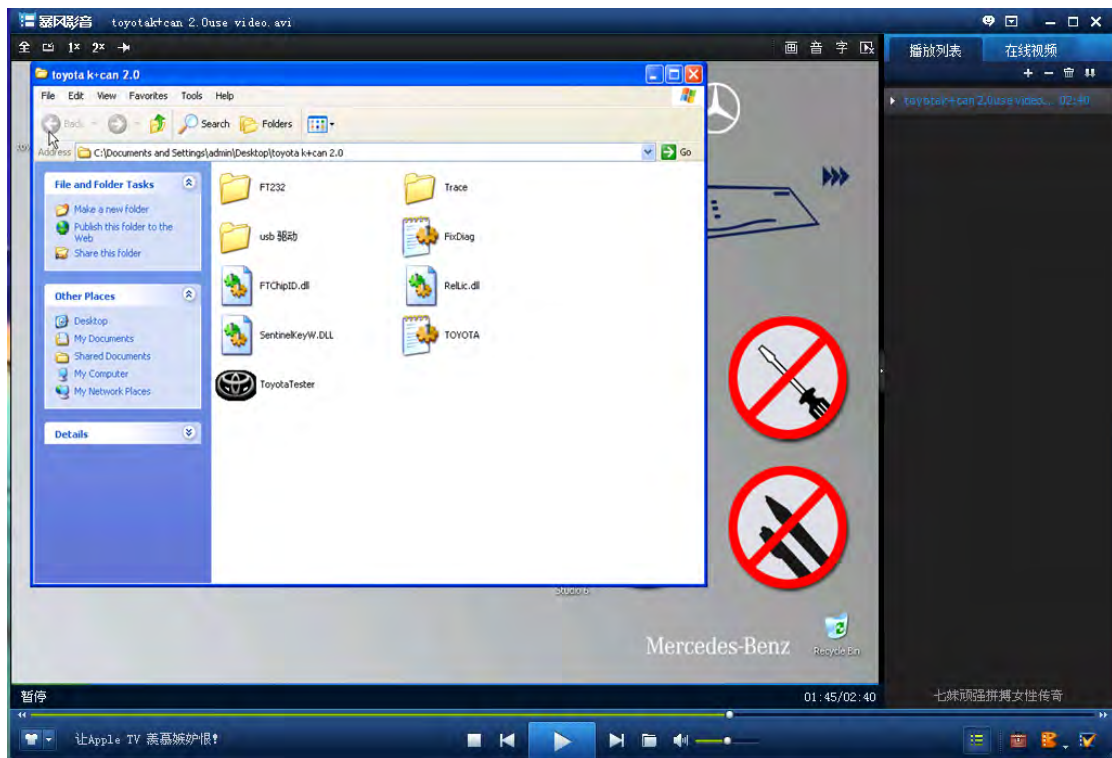
14. Then you will see this picture. And Click “Finish”



15. After that, close the computer management”

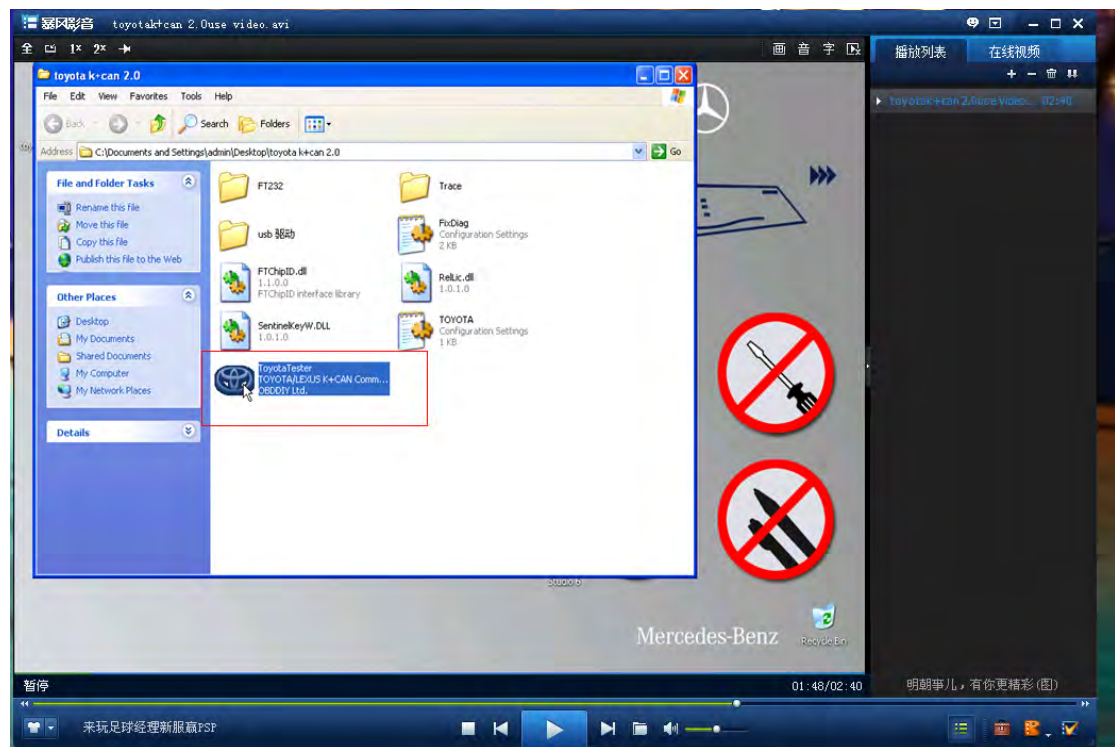


16. Open the toyota commander 2.0 software on your computer desktop you copied from the CD.

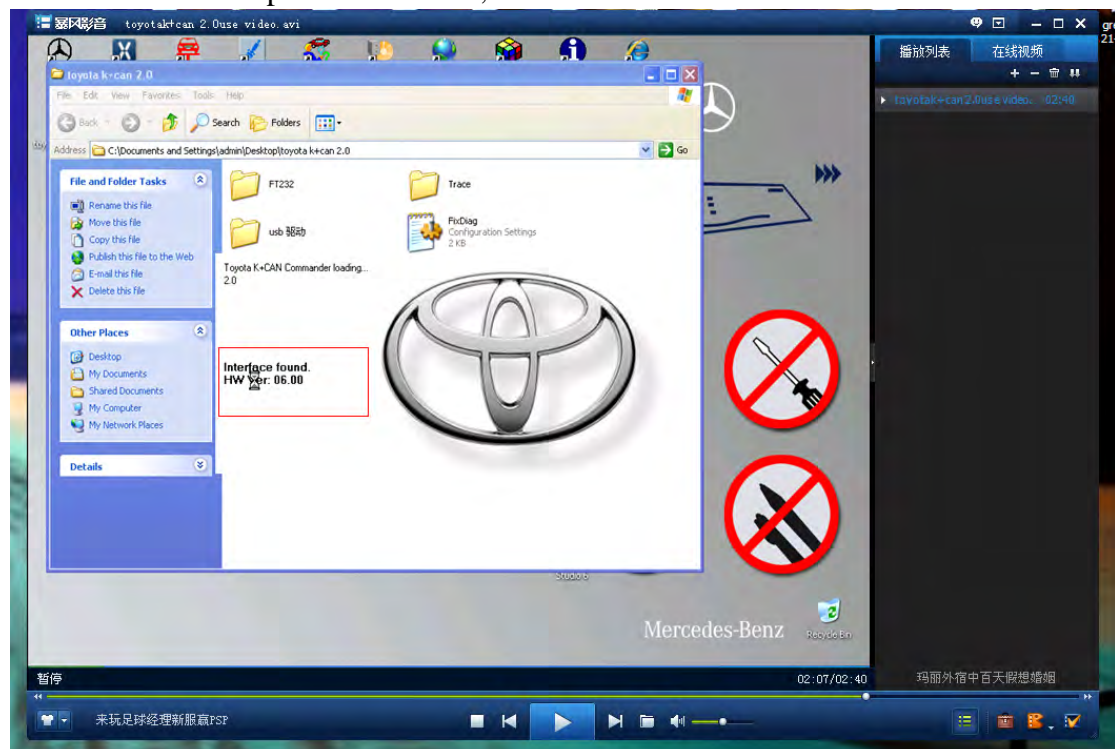




## 17. Click the Red Marks



## 18. You will see the picture as follow, and the interface was found.



19. Then you can do diagnosis.

